



Marsham Street, Westminster
London SW1P

GARTONJONES.COM



Marsham Street, Westminster London, SW1P

£600 Per Week

A bright and spacious 1 double bedroom apartment available to rent on the 5th floor (with lift) of this established and very popular development in Westminster, close to the River Thames, Houses of Parliament and Tate Gallery. The apartment is offered furnished and the property offers a separate modern kitchen, reception room with access to Juliette style balcony. Marsham Court has a communal hot water and heating system which is inclusive of the rental and a 24 hour concierge and you will be well located to a good selection of local amenities including shops and many popular restaurants. The transport services of Pimlico, Westminster, St James's Park and Victoria are all within walking distance. Marsham Street is fortunate to be in a superb Westminster location surrounded by an array of iconic London landmarks with Big Ben, Houses of Parliament and the Tate Gallery. A plethora of hotels, eateries and retail shops which include The Goring, St Ermins', St James Conrad, The Ivy Victoria, Aster and Flight Club to name just a few. Just a short walk away is the Chelsea College of Arts and St Johns Smith Square Concert Halls offering a variety of classical musical performances.

****Please note that the furniture may differ to that shown in the current photos**

Council Tax Band E (London Borough of Westminster)
Minimum Term 12 months
5 weeks Deposit
EPC C (77)

- One Bedroom Apartment
- 5th Floor (With Lift)
- 582 Square Feet (54.Sq.M)
- Reception Room
- Separate Kitchen
- Bathroom
- Available: 9th August 2025
- Communal Hot Water & Heating Inclusive
- Close to Local Shops & Restaurants
- Walking Distance to St James's Park, Westminster, Pimlico & Victoria Transport Links

GARTON JONES.COM

49 Marsham Street Lettings:

London

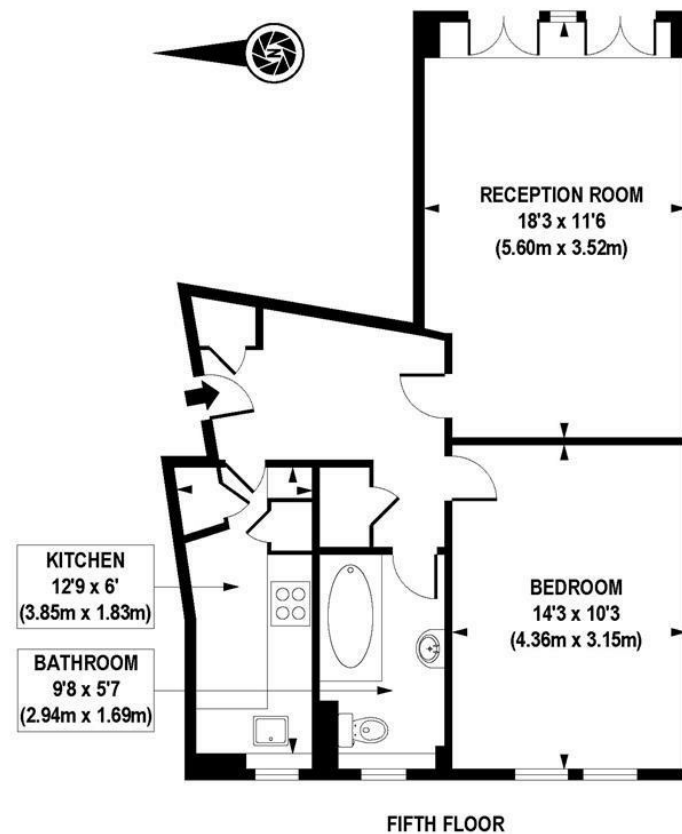
SW1P 3DP

+44 (0) 20 7340 0480

westminster@gartonjones.com

www.gartonjones.com





APPROXIMATE GROSS INTERNAL AREA 582 sq. ft / 54.15 sq. m

